

whiteley helyar



1,085 ft²



3 bedrooms



2 bathrooms



communal
parking

Guide Price £350,000

Flat 4, Meadow View, 8 Kelston Road, Bath, BA1 3QN

DESCRIPTION

A spacious 3 double bedroom apartment on the first floor of a particularly fine detached period house, peacefully tucked away in a sought after and convenient location with parking and shared gardens.

ACCOMMODATION

3 double bedrooms
kitchen

2 shower rooms
gas fired heating

large living room

EXTERNALLY

The property stands in attractive communal gardens, mostly laid to lawn. There is a gated bin/recycling area and 1 allocated car parking space.

LOCATION

Meadow View is an elegant Victorian house with a stunning oak panelled entrance hall, in this handy and popular location, within an easy stroll of the various shops and amenities in Weston Village. Wonderful walks up Kelston Roundhill or along the river and cycle path are close at hand, the centre of Bath is within 3 miles (well served by buses) and swift access to the M4 is available without having to cross the city.

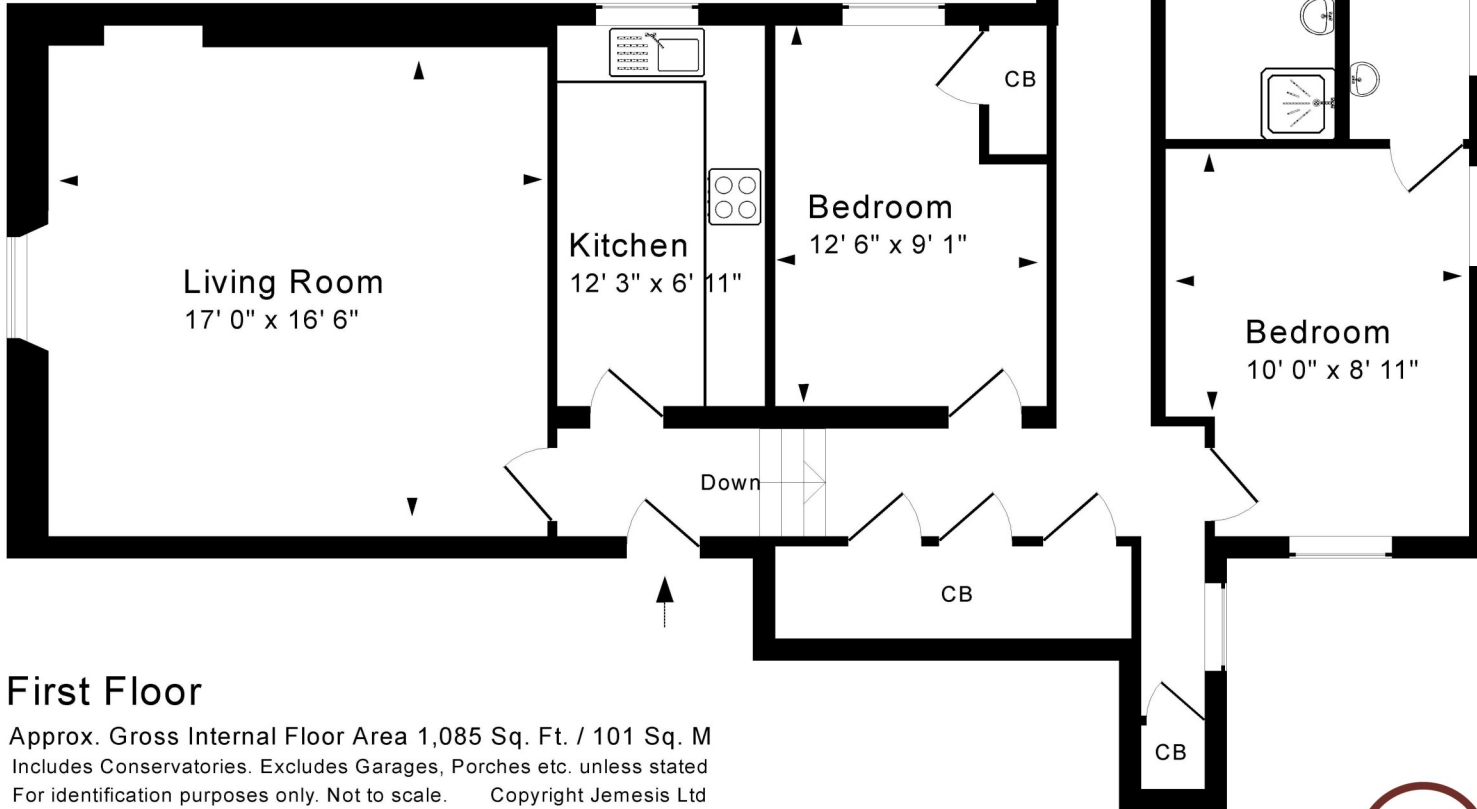
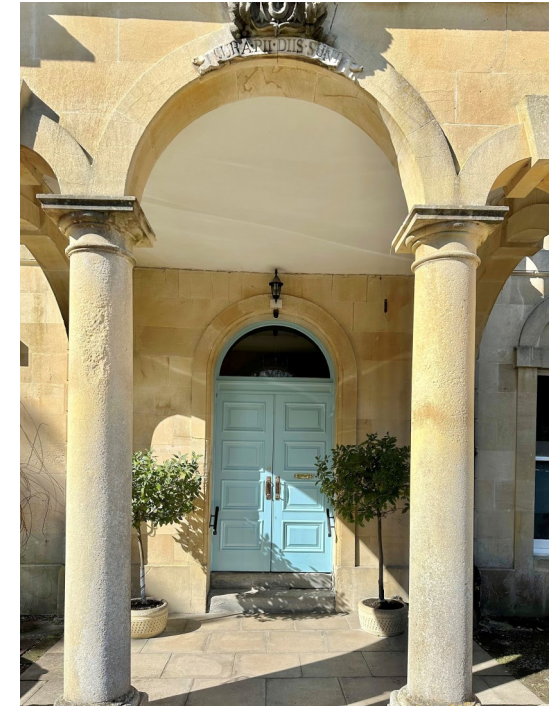




Tenure: Share of freehold
Monthly service charge: £250 per month
Council tax band: 'D' £2,107.05



Energy Efficiency Rating		
	Current	Potential
Very energy efficient - lower running costs		
A (92+)		81
B (81-91)		
C (69-80)	69	
D (55-68)		
E (39-54)		
F (21-38)		
G (1-20)		
Not energy efficient - higher running costs		
England & Wales	EU Directive 2002/91/EC	
www.epcau.com		



First Floor

Approx. Gross Internal Floor Area 1,085 Sq. Ft. / 101 Sq. M
 Includes Conservatories. Excludes Garages, Porches etc. unless stated
 For identification purposes only. Not to scale. Copyright Jemesis Ltd
 Drawing Number: 172-0558
 Flat 4, Meadow View, 8 Kelston Road, Bath, BA1 3QN.

